

Bowman

PA 100 Northbound at Exton Train Station SR 0100 SEC CES (MPMS #118025)

July 23, 2025

Agenda

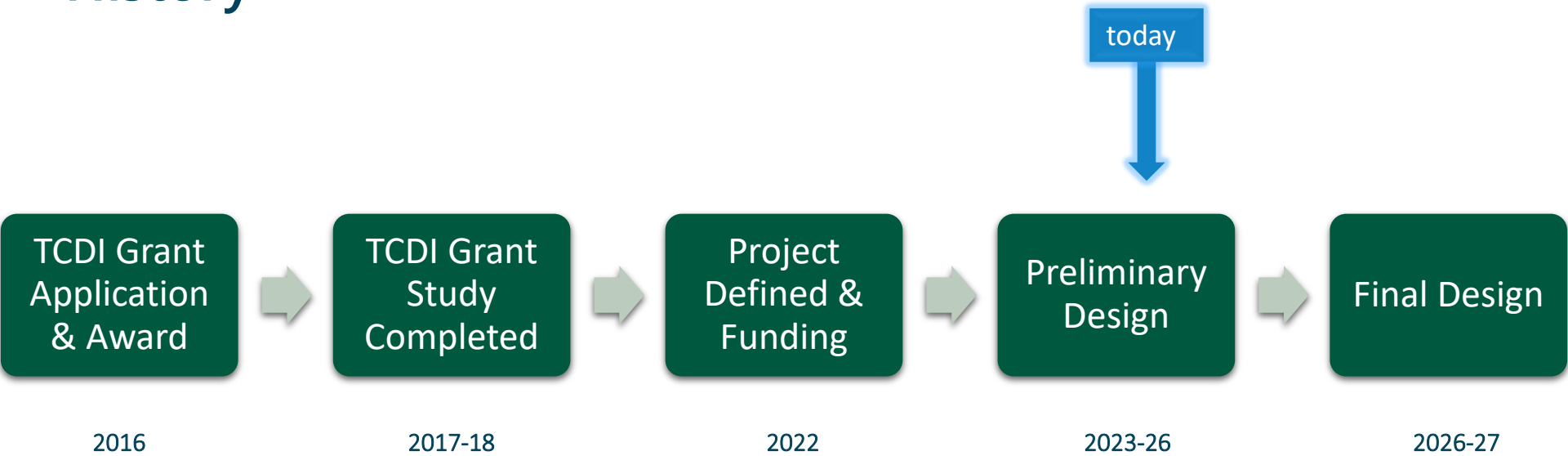


- Project Overview
- History
- Purpose & Need
- Proposed Improvements
- Traffic Volumes & Operations
- Schedule

Project Overview

- Reduce recurring congestion along northbound SR 100 near Exton Train Station.
- Add a third northbound travel lane along SR 100 between SR 100 Bypass ramp through Exton (US 30) Bypass Off-Ramp/Howard Road intersection.
- Reduce collisions and improve corridor safety caused by traffic congestion.
- Provide missing pedestrian sidewalk connections along west side of SR 100.

History



Needs

- Long vehicle delays at the SR 100/US Route 30 Exton Bypass intersection.
- Failing level of service operations (LOS F).
- Long queue lengths at the SR 100/US Route 30 Exton Bypass intersection.
- Inadequate capacity along Northbound SR 100 to access the Exton Train Station and SEPTA/Amtrak services.

Purpose

- To reduce delays and queues on Northbound SR 100 while keeping within the constraints of the two existing railroad bridges.

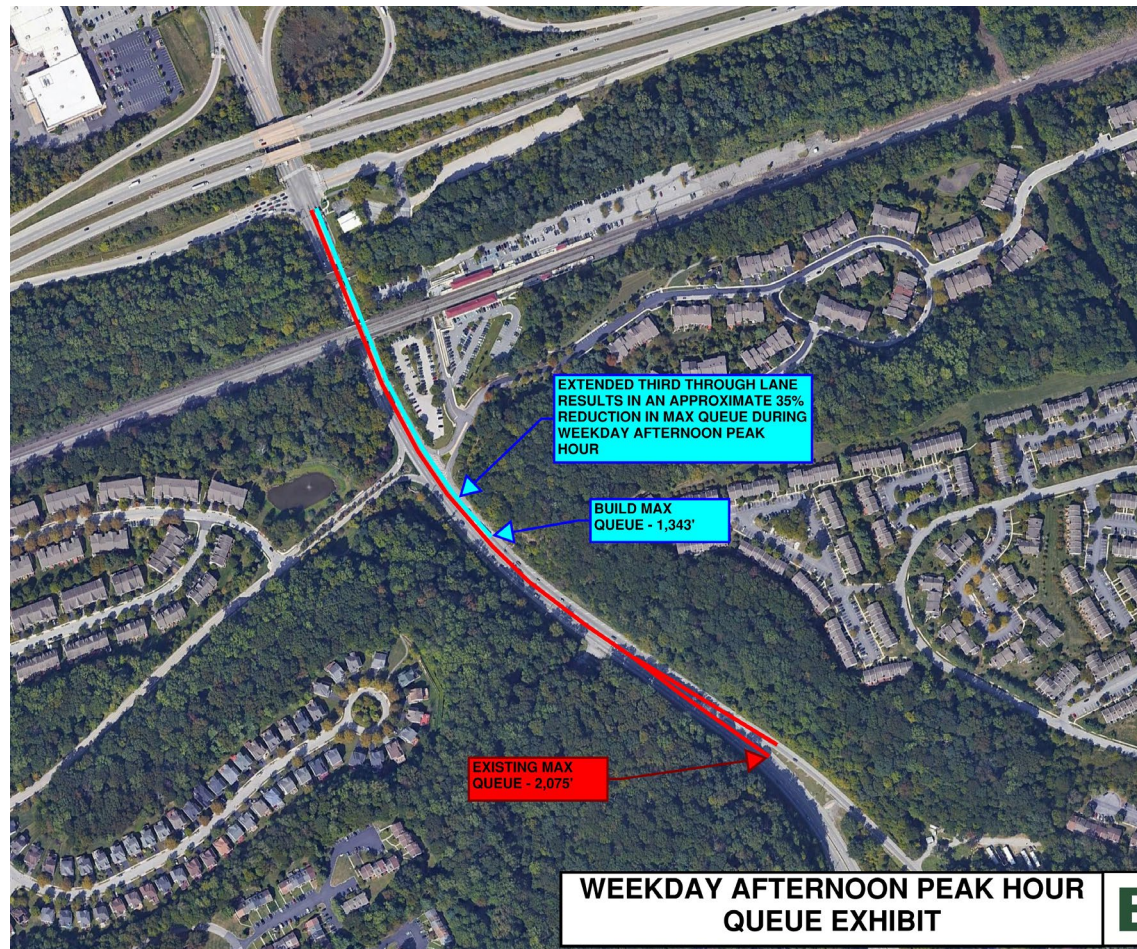
Traffic Operations

PA 100 Northbound South of US 30 Bypass	Today (2025)	Design Year (2048) Build
Average Daily Traffic (vehicles)	30,359	33,585
Level of Service	F	F
Delay per vehicle	238.5 seconds	119.1 seconds
Queuing (feet)	2,075'	1,343'

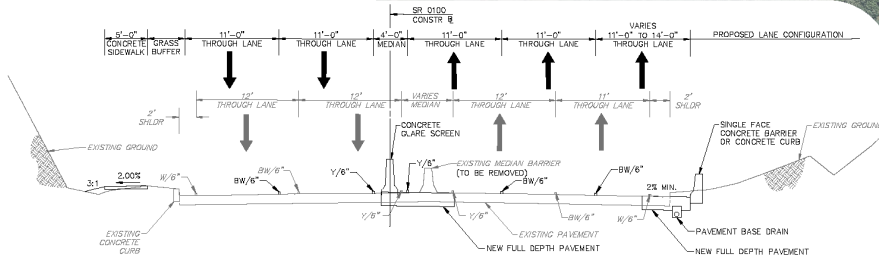
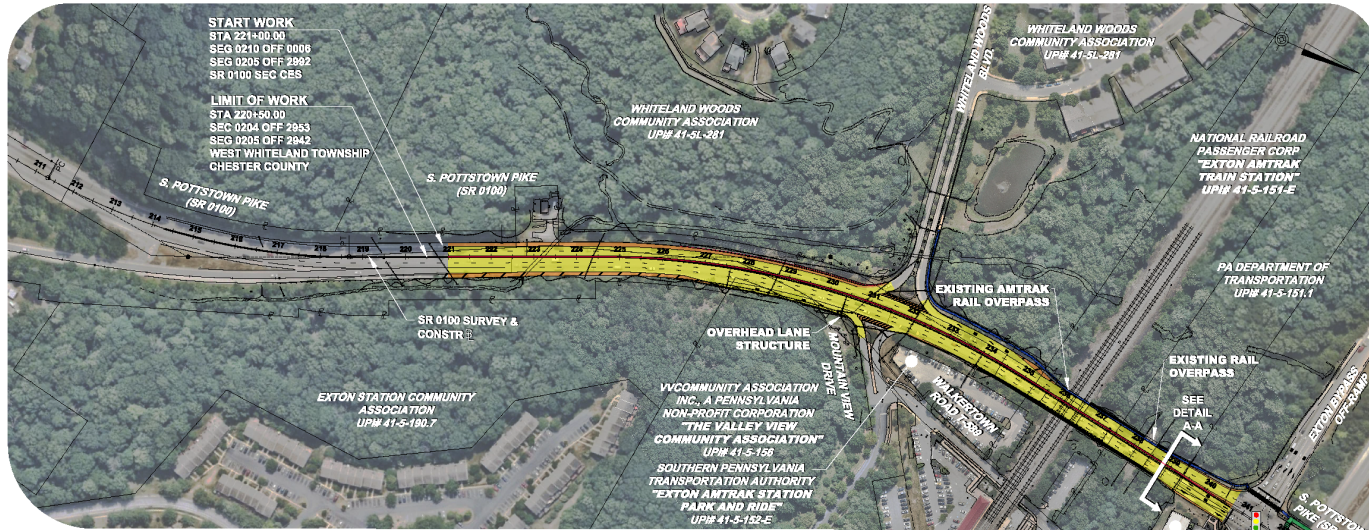
Traffic Operations

Existing vs Design Year Queues

- Design Year 2048
- Weekday Afternoon Peak Hour Queues
- 35% Reduction in Queue Lengths with extended NB lane

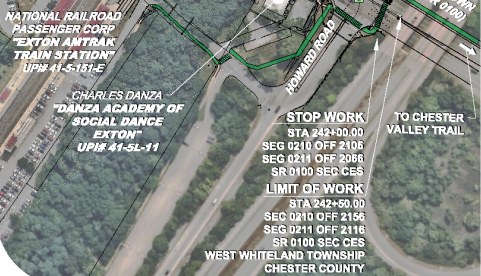
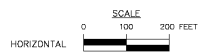


Improvements



LEGEND

- LANES
- SHOULDERS
- PROPOSED SIDEWALK
- PROPOSED BARRIER / CURB / MEDIAN
- CHESTER VALLEY TRAIL TO EXTON TRAIN STATION CONNECTOR

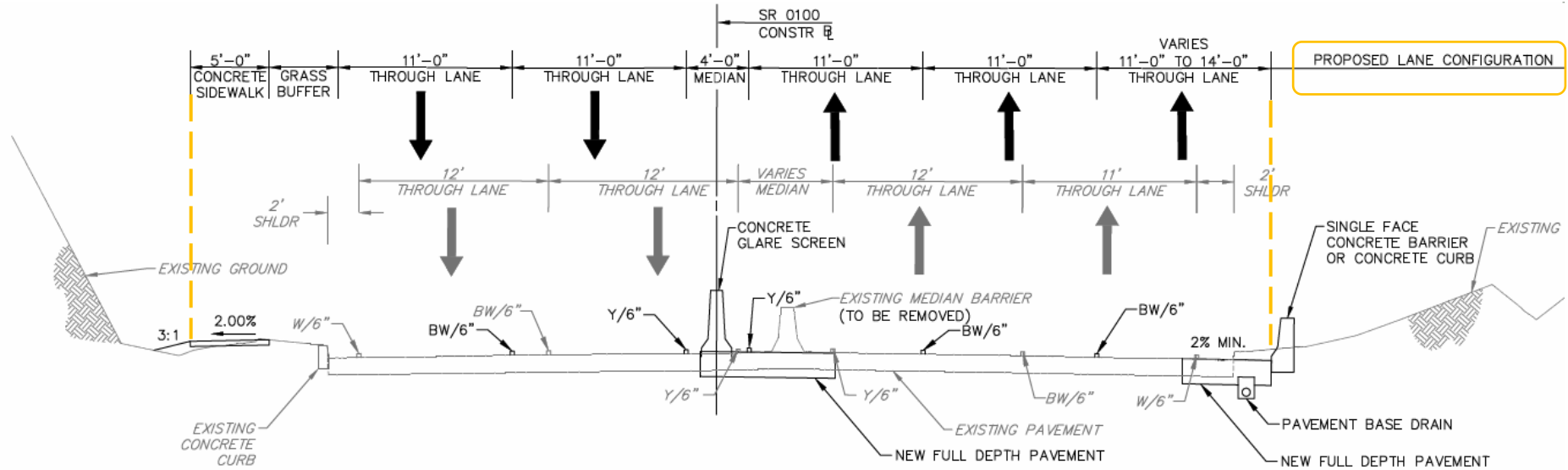


PA 100 NORTHBOUND AT EXTON TRAIN STATION
SR 0100 SEC CES (MPMS #118025)

DESIGN - 2023 TO 2027
 LET DATE - 4/30/2027
 CONSTRUCTION - 12 TO 15 MONTHS

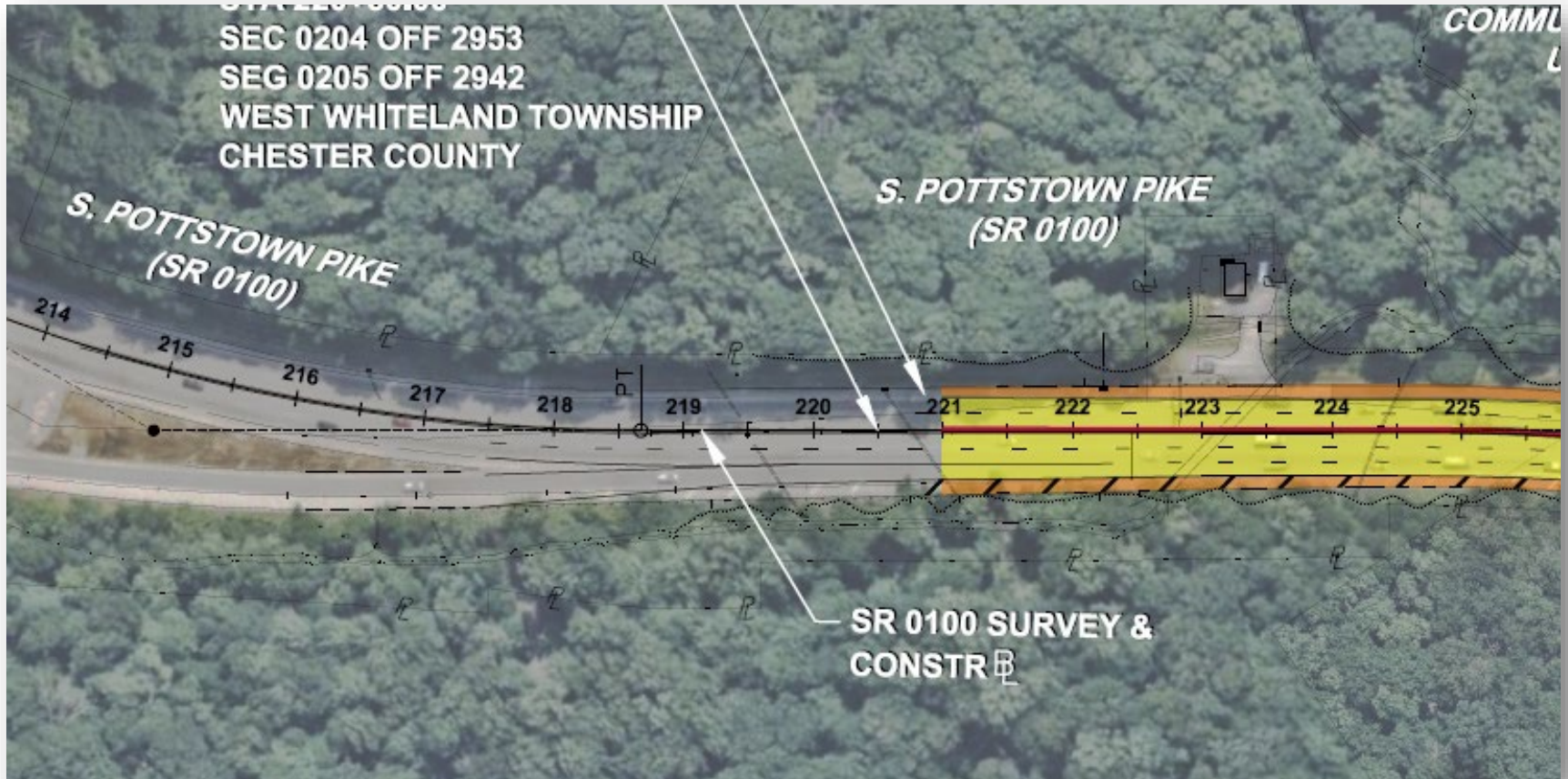


Improvements



DETAIL A-A: POTTSTOWN PIKE AT RAIL OVERPASS

Improvements



Improvements



Improvements



Schedule

- Design: 2023 to 2027
- Construction Bid/Let: Spring of 2027
- Construction: 12 to 15 months

The background features the letters 'Q&A' in a large, bold, light teal font. The 'Q' is on the left, the ampersand is in the middle, and the 'A' is on the right. The text 'Questions?' is overlaid on the 'Q' in a smaller, white, sans-serif font.

Questions?