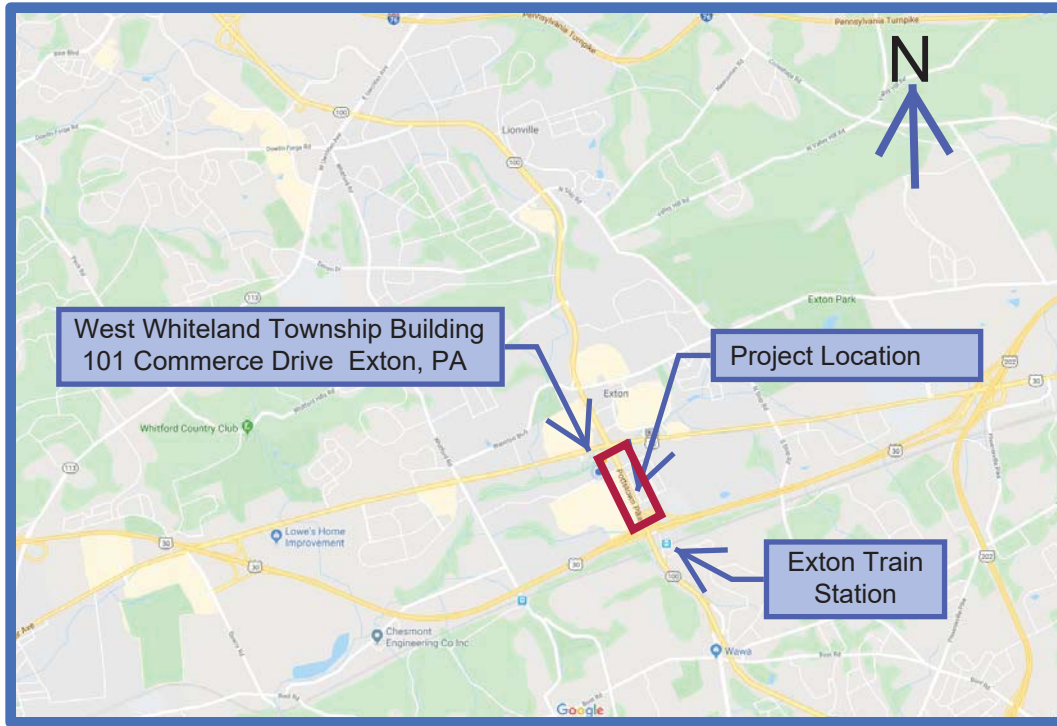
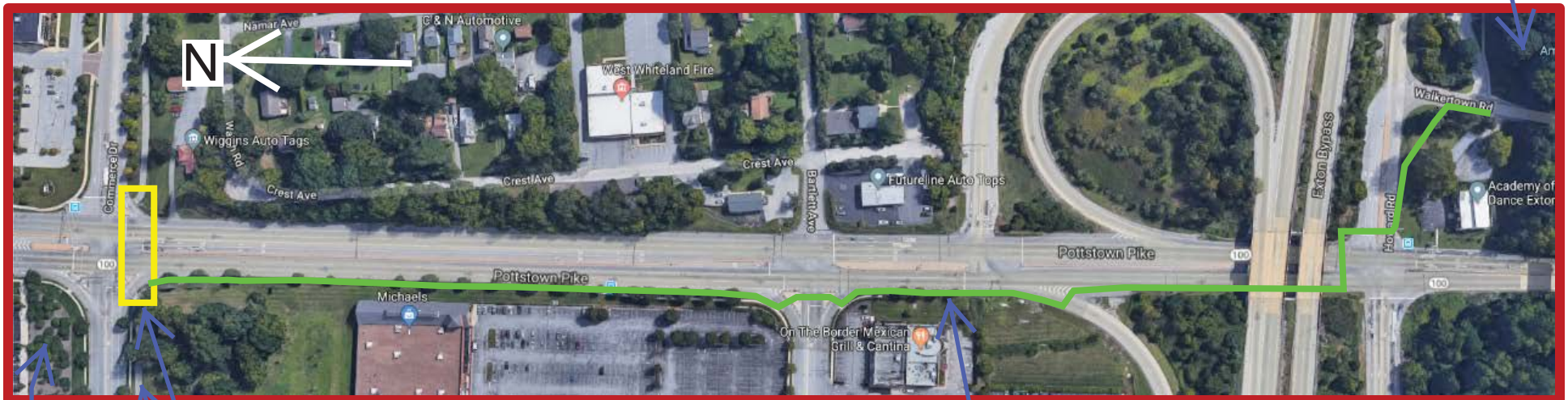


Figure #1 - Project Location and Overview



**Rt. 100 Multi-Modal Trail -
Exton Train Station to Chester Valley Trail
and
Signal Upgrades and Crossing Improvements to
the Chester Valley Trail**

Project Overview
The project primarily consists of the construction of a 2,500 ft. multi-use path along the west side of Pottstown Pike (Rt. 100) from the Exton Train Station to the Chester Valley Trail (Commerce Drive) along with the necessary modification and/or installation of pedestrian components to existing traffic signals. Work also includes construction of ADA compliant curb ramps, crosswalks, design-build pedestrian lighting, drainage modifications, modification/reconstruction of traffic islands, signing & striping, and site restoration.



Township Building

Signal Upgrades & Crossing Improvements
(Administered by Chester County)

Chester Valley Trail (CVT)

Rt. 100 Multi-Modal Trail
(Administered by West Whiteland Twp)

Exton Train Station