

Fire Prevention & Safety Inspections



Annual Fire Prevention Inspection Business information

- West Whiteland Township adopted the 2015 International Fire Code.
- The inspection checks for the minimum requirements of the IFC 2015.
- The inspection sets a reasonable level of life safety and property protection from fire, explosion or dangerous conditions to building and structures within the Township.
- The inspections are enforced in an effort to prevent a tragedy from affecting the lives of those who work, live and visit the Township on a daily basis.
- It also can help prevent an owner of a business, restaurant or home from suffering the loss of belongings or property.
- The Township does charge a fee for the inspection.
- A self-inspection check list can be provided upon request.

If you are interested in hosting a training or have questions about fire safety programs, please contact West Whiteland Township Fire Marshal Mark Moses or the Assistant Fire Marshal Duane Brady, Sr. at:

West Whiteland Township
101 Commerce Drive
Exton, PA 19341

Phone: 610-363-9525
Fax: 610-280-7739

By email at:
mmoses@westwhiteland.org
dbrady@westwhiteland.org

Fire safety is our number one goal.



Fire Safety Training we provide:

- Fire prevention and safety inspections
- Portable fire extinguishers
- Evacuation planning and procedures
- Evacuation drill training



- We can be a point of contact for other resources such as EMS training, crime prevention, active shooter training, etc.
- We can issue letters to businesses to satisfy other regulatory agencies such as DPW, State Health Department and Insurance agencies.

Fire safety is for everyone!

Fire Extinguisher Training



Fire Extinguishers – Know How To Use Them.

To use your fire extinguisher effectively, remember the four step acronym "P.A.S.S."

Pull the pin holding the extinguisher with the nozzle pointing away from you. Remove the pin, seal or the lever release mechanism to unlock the operating lever.

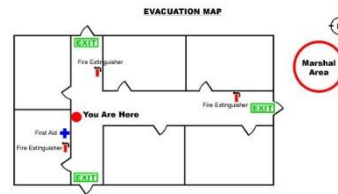
Aim the extinguisher nozzle (hose) at the base (bottom) of the fire. Stand about 6-10 feet away from the fire.

Squeeze the lever fully to discharge the extinguishing agent through the nozzle.

Sweep the nozzle (hose) from side to side aiming at the base of the fire, continuing the motion until the fire is extinguished.

Never use an extinguisher if the fire is big, spreading, or you do not have a clear escape route

Evacuation Planning & Procedures



Know your way out! Have a plan and stick to it!

Fire Evacuation Helpful Hints:

- Have a Plan and practice it.
- Know how to get outside and where to meet.
- Never go back into the burning building.
- Wait for trained firefighters and give them directions to anyone trapped.
- Keep stairways and exits clear and free from clutter.
- Make sure people with disabilities are included in escape planning and practice.
- Keep your cell phone with you.
- Do not assume that you can or will be rescued from the roof.
- Use the stairs – never use the elevators during a fire.

Having a plan is the quickest way out

Evacuation Drill Training



You can make it out Alive if you Practice to Survive!

Emergency Evacuation Drills Helpful Hints:

- Know the evacuation plan.
- Be patient; evacuating large buildings can take time.
- Use the stairs – never use the elevators during a fire.
- Know the location of all building exits and fire alarm controls.
- Leave immediately if you hear the fire alarm.
- Follow instructions given over your buildings public address system, if you have one.
- If you escape through smoke, get low and go to your exit.
- Feel the door. If it's hot try another way out.
- Close doors behind you.

Never go back into a burning building