



**WEST WHITELAND TOWNSHIP  
BICYCLE & PEDESTRIAN PLAN  
PUBLIC INFORMATION MEETING**

**BOARD OF SUPERVISORS MEETING**

**AUGUST 22, 2018**

# PURPOSE OF THE PLAN

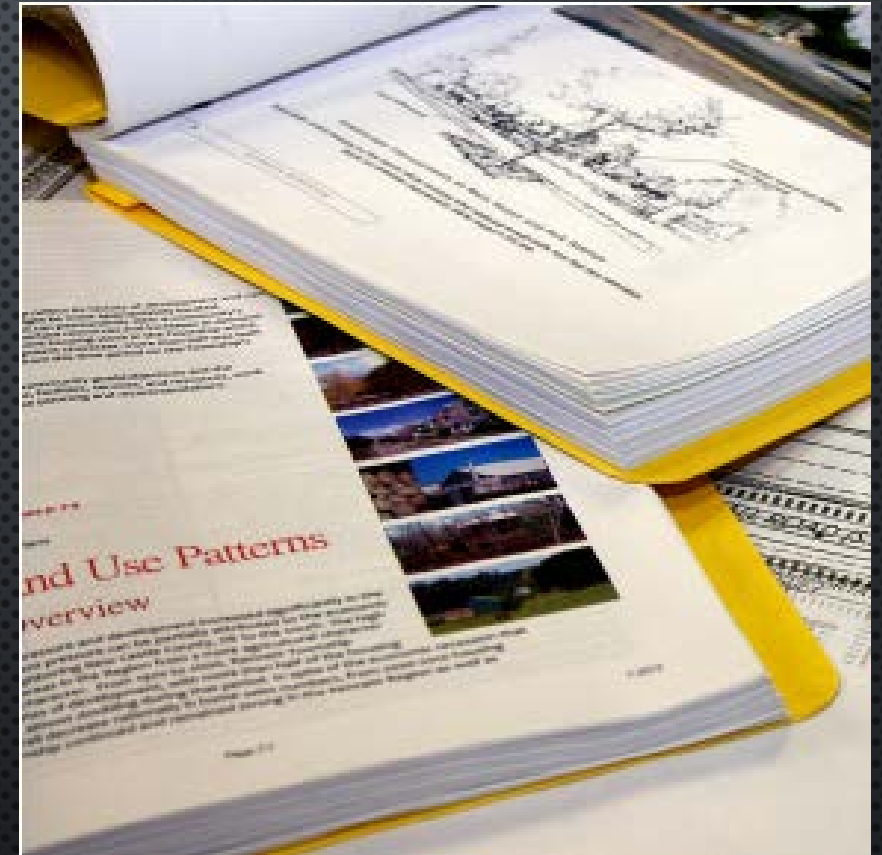
## IDENTIFY PRIORITY BIKE/PEDESTRIAN PROJECTS WITHIN THE TOWNSHIP:

- TO CREATE/COMPLETE A COMPREHENSIVE NON-MOTORIZED CIRCULATION NETWORK
- TO PROVIDE ALTERNATIVE TRAVEL OPTIONS TO PLACES OF INTEREST WITHIN THE EXTON CROSSROADS FOR LOCAL RESIDENTS, BUSINESSES, COMMUTERS, AND FOR RECREATION.

PROJECTS IDENTIFIED WILL BE ANALYZED FOR FEASIBILITY AND PROVIDE DETAILS ON PARTIES RESPONSIBLE FOR PROJECT CONSTRUCTION.

# CONTENTS OF THE PLAN

- PLAN INTRODUCTION AND CONTEXT
- EXISTING CONDITIONS ANALYSIS
- PUBLIC SURVEY
- PRIORITY PROJECTS & FEASIBILITY ANALYSIS
- RECOMMENDATIONS
- IMPLEMENTATION PLAN (ACTION PLAN)
- APPENDICES





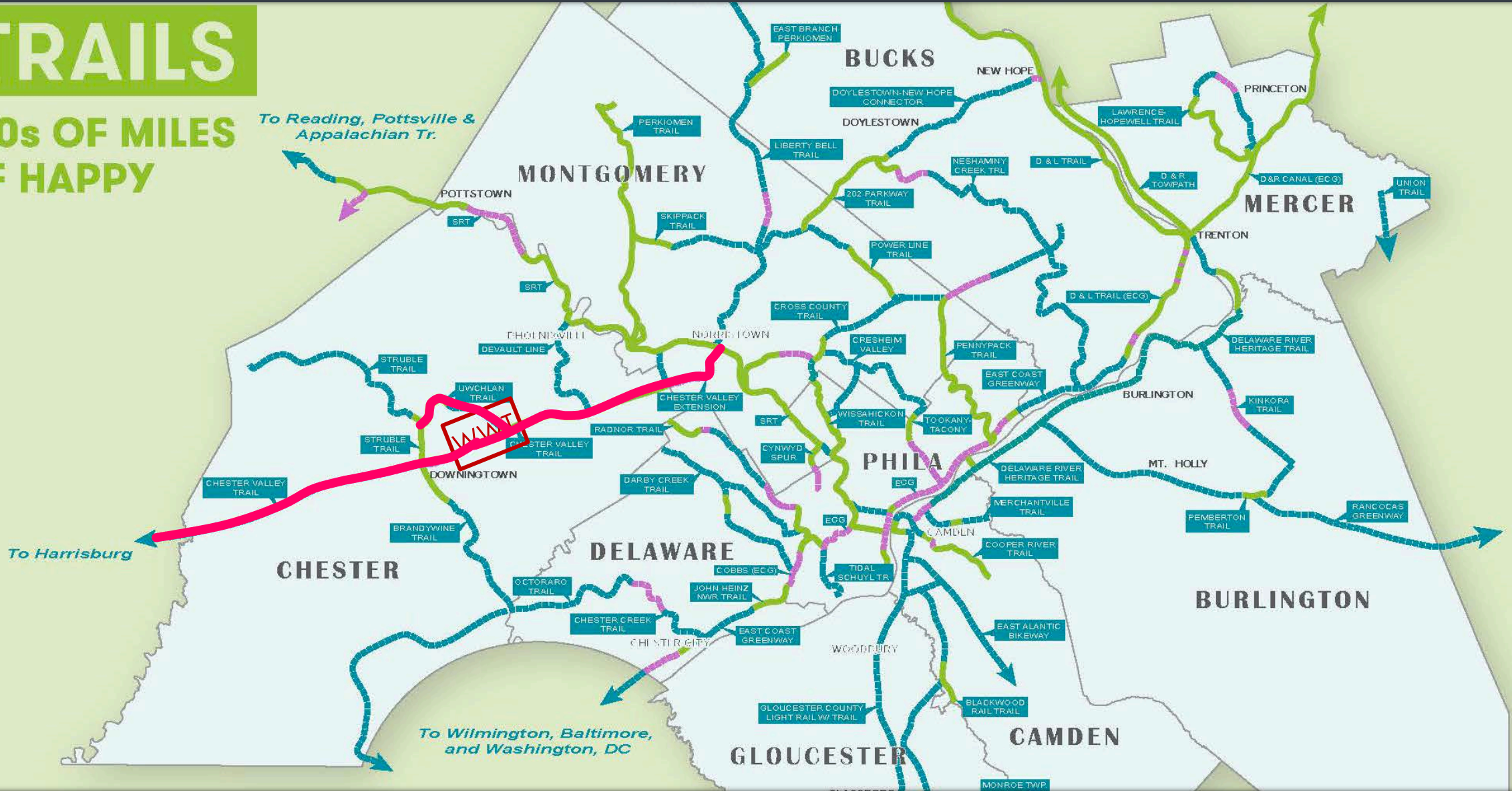
# TOWNSHIP BIKE/PED. PLANNING HISTORY

- WEST WHITELAND COMPREHENSIVE PLAN (1994)
- WEST WHITELAND PEDESTRIAN PLAN (1997-1999)
- WEST WHITELAND OFFICIAL MAP (2004)
- CENTRAL CHESTER COUNTY BICYCLE AND PEDESTRIAN CIRCULATION PLAN (2013)
- WEST WHITELAND LINCOLN HIGHWAY AND WHITFORD ROAD CORRIDORS PLAN (2015)
- MULTI-MODAL CIRCULATION HANDBOOK FOR CHESTER COUNTY, PA (2015)
- CHESTER VALLEY TRAIL: EXTENSION TO DOWNINGTOWN FEASIBILITY STUDY/MASTER PLAN (2017)
- EXTON STATION AREA CONCEPT PLAN (2018)

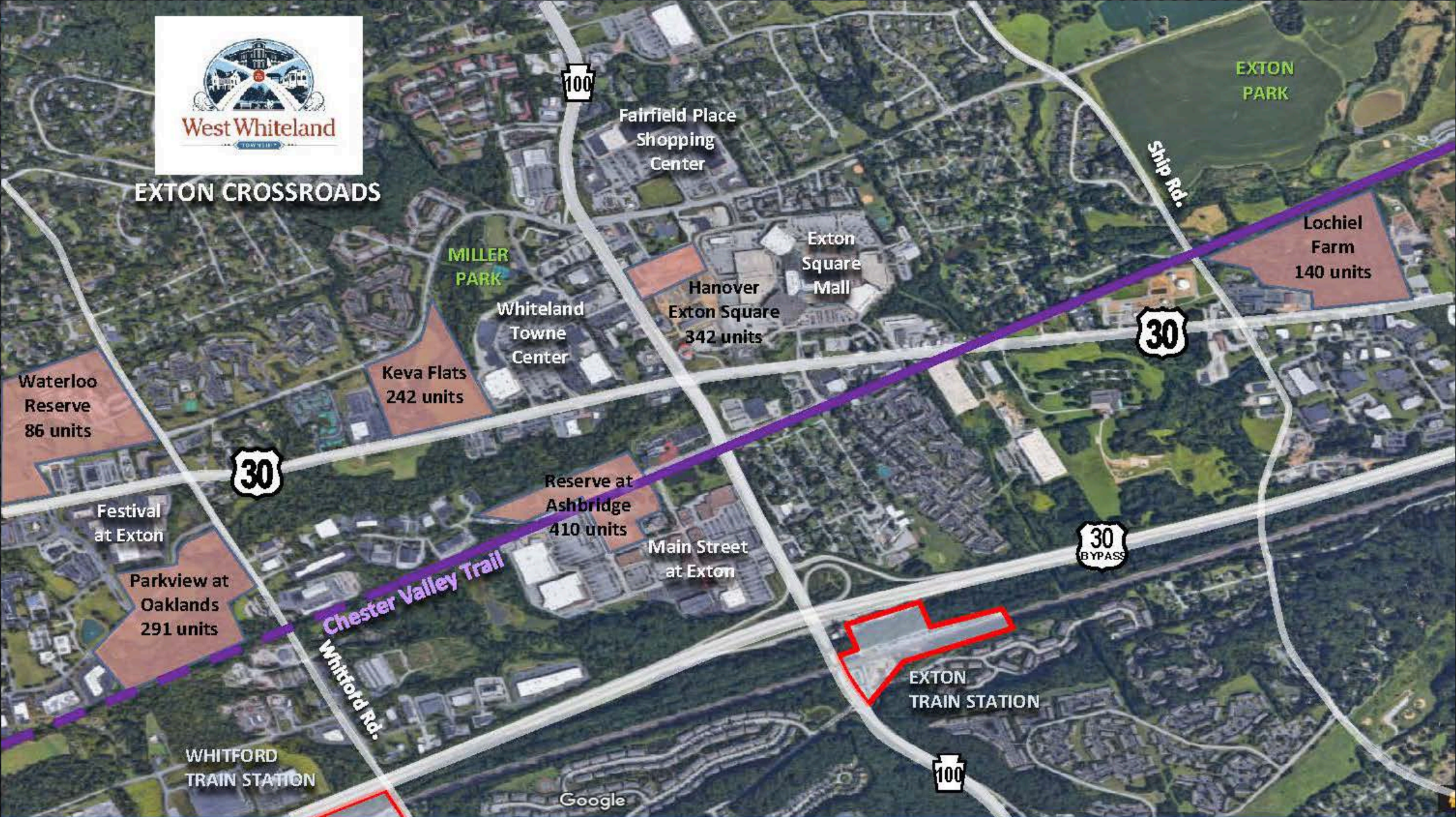
# REGIONAL CONNECTIONS

## TRAILS

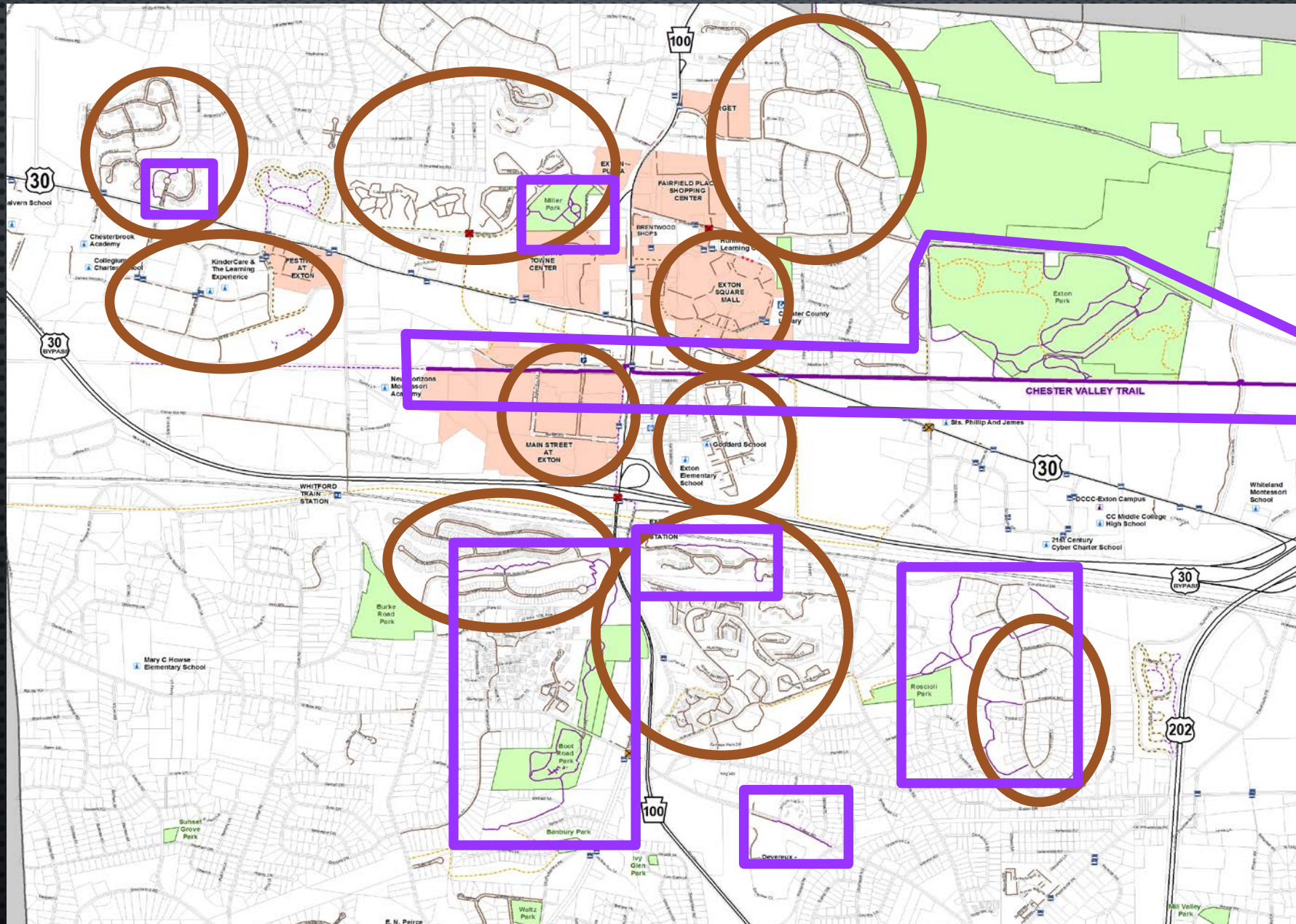
100s OF MILES  
OF HAPPY



# DEVELOPMENT IN EXTON CROSSROADS



# EXISTING BIKE/PED. NETWORK



# EXISTING BIKE/PED. NETWORK BY THE NUMBERS

- TRAILS:

- EXISTING: 13.3 MILES
- DESIGN/CONSTRUCTION: 2.9 MILES
- PROPOSED: 8.7 MILES

- SIDEWALKS:

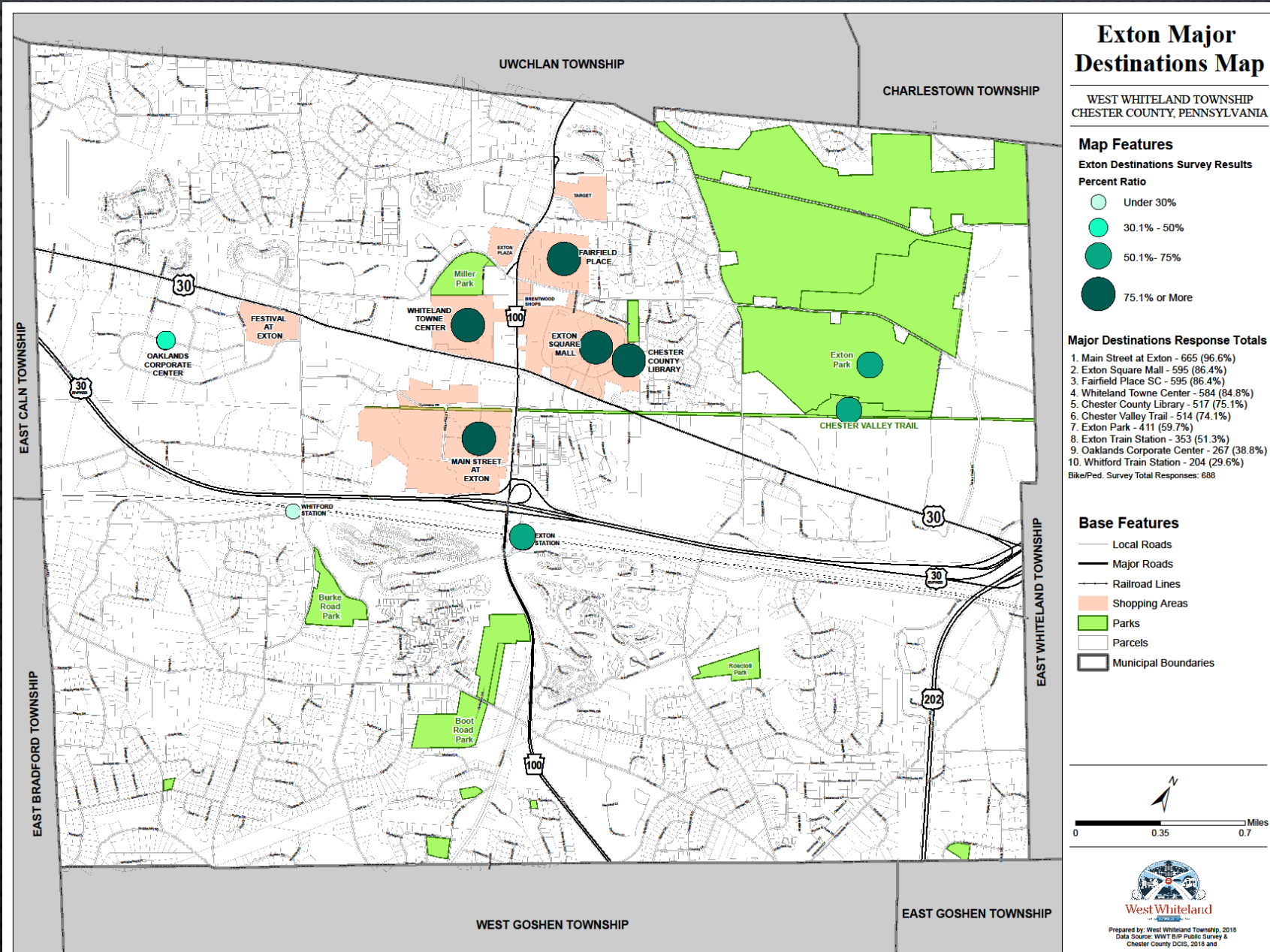
- EXISTING: 50.9 MILES
- PROPOSED: 4.7 MILES (DOES NOT INCLUDE SOME RECENTLY APPROVED DEVELOPMENTS)



CVT @ Valley Creek Blvd., CCPC 2017

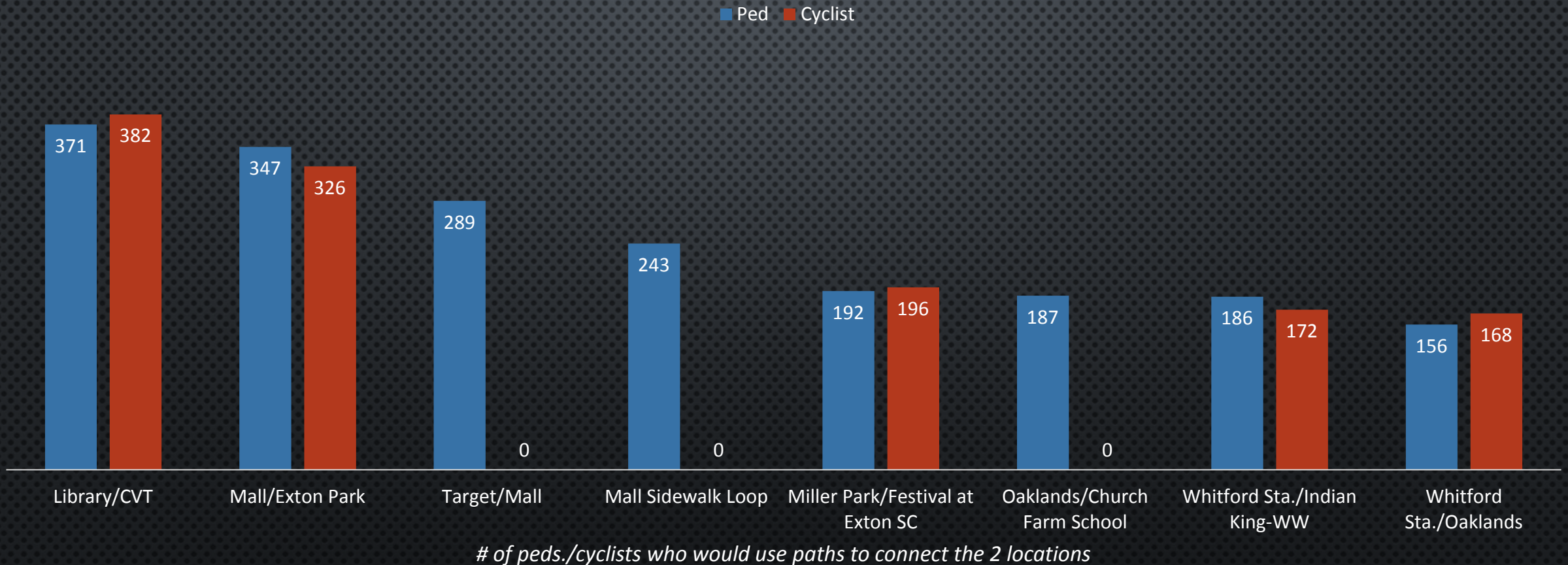


# PUBLIC SURVEY RESULTS



# PUBLIC SURVEY RESULTS

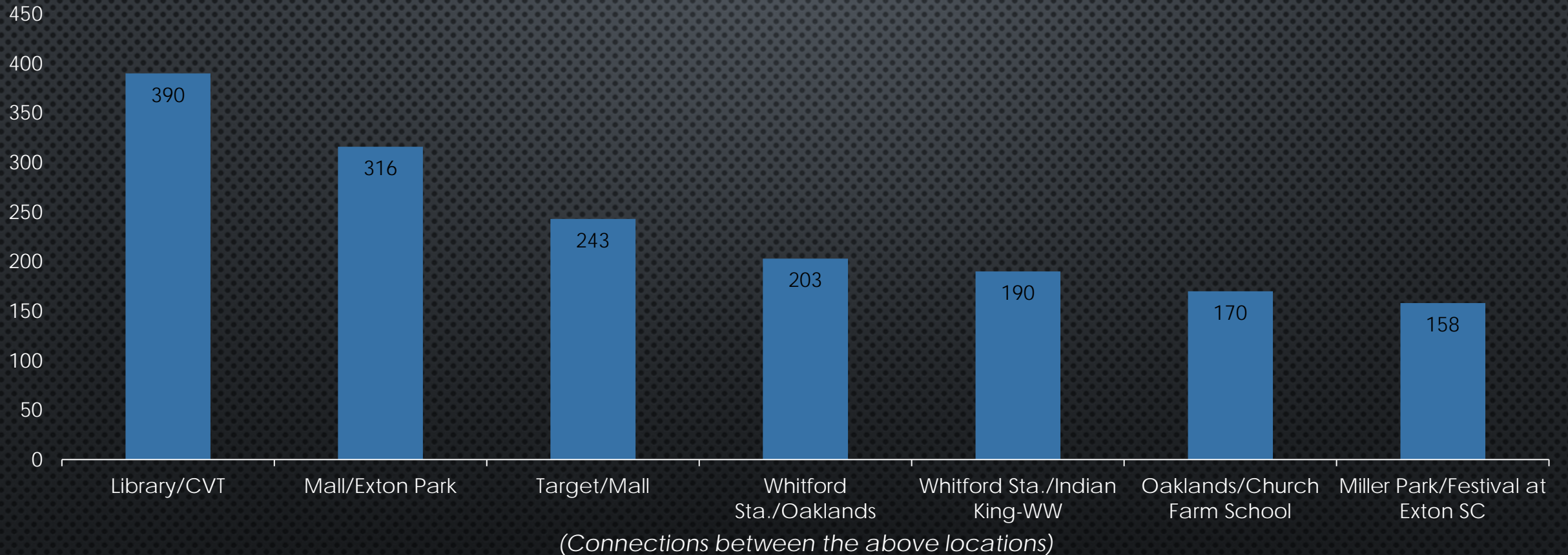
When you think about walking/biking in Exton, which of the following improvements would you likely use as a pedestrian/cyclist?



\* Bike and Pedestrian Plan survey conducted in Spring, 2018 and received 688 total responses

# PUBLIC SURVEY RESULTS

Of the projects mentioned, please select the top three that you feel are important enough to use Township dollars to accomplish.



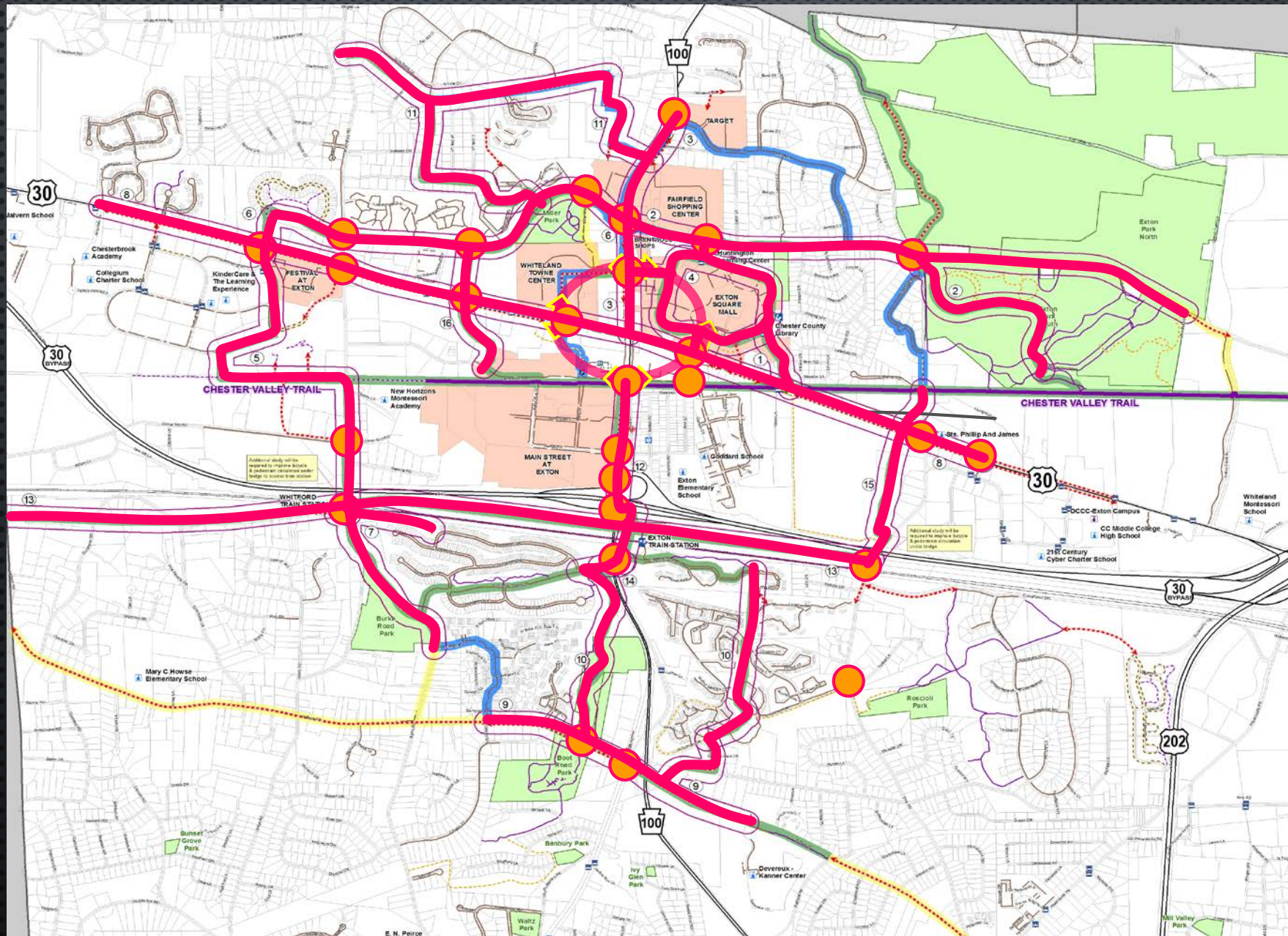
\* Bike and Pedestrian Plan survey conducted in Spring, 2018 and received 688 total responses

# PLAN PROJECT PRIORITIES

- PROJECTS IDENTIFIED CONSIST OF THE FOLLOWING:
  - TRAILS
  - SIDEWALKS
  - SIGNED & MARKED BIKE ROUTES
  - INTERSECTION IMPROVEMENTS
- FEASIBILITY ANALYSIS CONDUCTED:
  - EXISTING CONDITIONS
  - PROJECT COMPONENTS/IMPROVEMENTS
  - OPPORTUNITIES
  - CONSTRAINTS
  - ACQUISITION/COORDINATION



# DRAFT PLAN IMPROVEMENTS MAP





# REQUESTED NEW CONNECTIONS BY THE NUMBERS

- PLAN TRAILS:

- PROPOSED: 3.5 MILES

- PLAN SIDEWALKS:

- PROPOSED: 10.6 MILES

- PLAN BIKE ROUTES:

- SIGNED/MARKED BIKE ROUTE: 28.6 MILES

- PLAN ROAD CROSSINGS:

- ADD CROSSWALKS/PED. SIGNALS: 21

- UPDATE CROSSWALKS/PED. SIGNALS: 15

- NETWORK WHEN COMPLETED:

- TRAILS TOTAL: 25.8 MILES\*

- SIDEWALKS TOTAL: 66.2 MILES\*

- SIGNED BIKE ROUTES TOTAL: 28.6 MILES

- ROAD CROSSINGS WITH CROSSWALKS/PED SIGNALS: 53

\* Does not include recently approved developments  
Draft numbers subject to change



# DRAFT PLAN RECOMMENDATIONS

- UPDATE TOWNSHIP'S OFFICIAL MAP
- IDENTIFY PROJECTS TO ADD TO THE TOWNSHIP'S CAPITAL IMPROVEMENTS PLAN
- ESTABLISH WAYFINDING SIGNAGE WITHIN EXTON CROSSROADS
- CONDUCT ADDITIONAL STUDIES
- UPDATE ZONING/SUBDIVISION & LAND DEVELOPMENT ORDINANCES

# NEXT STEPS

- COMPLETION OF RECOMMENDATIONS AND PLAN (AUGUST/NOVEMBER)
- PRESENTATION OF FINAL PLAN TO PC & BOARD OF SUPERVISORS (NOVEMBER/DECEMBER)
- ADOPTION OF PLAN (DECEMBER)

WE ARE HERE

PROJECT  
START DATE  
(DECEMBER 2017)

EXISTING  
CONDITIONS  
(DEC-MAR  
2018)

PUBLIC SURVEY  
(MARCH-MAY  
2018)

PRIORITY PROJECTS  
FEASIBILITY  
ANALYSIS  
(JUNE-JULY 2018)

PUBLIC  
INFORMATION  
MEETING  
(AUGUST 2018)

PLAN  
RECOMMENDATIONS  
(AUG-NOV 2018)

COMPLETION &  
ADOPTION OF PLAN  
(NOV-DEC 2018)

IMPLEMENTATION:  
LD, GRANTS, &  
ADVOCACY

Dates subject to change

THANK YOU

QUESTIONS?

JUSTIN SMILEY, AICP

TOWNSHIP PLANNER

EM: [JSMILEY@WESTWHITELAND.ORG](mailto:JSMILEY@WESTWHITELAND.ORG)

PN: 610-363-9525 EXT: 3211