



Crossroads

Proud of Our Past. Pride in Our Progress.

WHAT'S INSIDE THIS ISSUE

- How to Stay Informed 2
- Pipeline Safety 3
- Call Before You Dig 3
- Yard Debris Disposal Schedule 4
- Electronic Drop-Off Events 4
- Community Donations 5
- Keeping Our Streams Clean 6
- Snow Reminders 7
- Development Map 8-9
- Chester Valley Trail 10
- Exton Train Station Update 10
- Exton Park Development 11
- Historic Preservation Awards... 12-13
- Police Department News 14
- Thank You FOTP Sponsors 15
- 3rd Annual Tree Lighting..... 16

Board of Supervisors Resignation

On October 25, the Board of Supervisors accepted Steve Soles' resignation at their regularly scheduled meeting.

Steve was the Board Chairman and had served on the Board since 2010. He helped lead the economic revitalization of the Township to make it the destination it is becoming today. Steve will be missed greatly, and we wish him much success in his future endeavors.

State law requires that the two remaining supervisors choose a replacement within thirty days. At the time of this printing, the Board has begun accepting applications and will appoint a new member at their regularly scheduled Board meeting on Tuesday, November 21, 2017.

Supervisors' full terms are six years. While there are four years remaining in Steve's term, the appointee will serve upon appointment until the next municipal election in November 2019. Voters then will decide who will serve the remaining two years in the term.



Steve Soles (center) with fellow Supervisors Joe Denham (left) and George (Bud) Turner (right).

**Look inside for
important dates
and new
developments!**

How to Stay Informed!

With safety top of mind these days, it is important to ensure you'll receive urgent notices should a need arise. There are numerous ways for West Whiteland Township residents to stay informed before, during and after emergencies, as well as to find out about what's happening every day.

Read on to learn how you can receive alerts and warnings from public safety officials and the Township.

EMERGENCY NOTIFICATION SYSTEMS



- West Whiteland's emergency notification system
- As a West Whiteland township resident, your home phone numbers are already registered, unless you have opted out.
- Visit our website to opt-in for cell phone calls, texts and/or email notifications.



- Nationwide program used by Chester County's 9-1-1's system.
- Create your safety profile.
- Give 9-1-1 the information they need to help you fast.
- Sign up at www.222.smart911.com



- Chester County's official source for emergency event notifications and important County services
- Register at www.readychesgo.org

COMMUNITY NEWS

- ▶ Township website
www.westwhiteland.org
- ▶ Township printed newsletter
- ▶ eNews through Constant Contact (emails)
 - Sign up on our website or
 - Text WESTWHITELAND to 22828
- ▶ Facebook
 - West Whiteland Township
 - West Whiteland Township Police Department
 - Chester County Department of Emergency Services (DES)
- ▶ Twitter
- ▶ Nextdoor



Pipeline Safety

You've likely heard about Sunoco's Mariner East II pipeline and related questions regarding pipeline safety in the community. In order to address these concerns, West Whiteland Township invited residents to a Pipeline Safety Meeting on September 21.

Township Supervisor George "Bud" Turner and members of the staff presented information to help residents "be prepared, not scared." Bill Turner (Deputy Director for Emergency Management, Chester Co. DES) was also on hand to field questions from the audience. Topics of the evening included education about pipelines, such as how to identify them, what they carry and the precautions taken to ensure they are functioning properly.

A theme of the meeting is that all of your emergency responders – including the West Whiteland Fire Company, West Whiteland Township Police Department and Chester County HazMat teams – are trained to work together and respond to all types of hazardous material incidents. As noted on the Chester County Department of Emergency Services website, "The various emergency service organizations and emergency management agencies in Chester County comprise a comprehensive, integrated system of mitigation, preparedness, response, and recovery should a hazardous materials incident occur in Chester County" .

The take-away for area residents? While the likelihood of a serious pipeline accident is small, there are steps you can take to be prepared just in case:

- Call 8-1-1 to find out what's below ground (esp. electric or gas lines) before you or your contractor start digging for any project.
- Make sure your information is up to date in the emergency contact systems, such as CodeRed, Ready ChesCo or Smart 911.
- Know the signs of a pipeline leak, including small bubbles of crude in a wet area, dead vegetation and sheen on water and call 9-1-1 if you see anything.
- Learn to identify pipeline markers and use the emergency contact information on them if needed.

Take a look at the Township website (www.westwhiteland.org) for more information about pipeline safety and preparedness and up-to-date information on the pipeline activity taking place in the Township.



**Know what's below.
Call before you dig.**

Call before you dig! Call 811 at least three business days before you start any digging project. Whether you are planning to do it yourself or hire a professional, smart digging means calling 811 before each job.

It's not just big jobs that require a call to 811. Whether you are planting a tree, installing a mailbox or building a deck, you should call 811 and follow the process outlined below:

Notify your local one-call center by calling 811 or making an online request 2-3 days before work begins. The center will transmit information to affected utility operators.

Wait 2-3 days for affected utility operators to respond to your request. On average, 7-8 utility operators are notified for each request.

Confirm that all affected utility operators have responded to your request by comparing the marks to the list of utilities the one-call center notifies.

Respect the marks. The marks provided by the affected utility operators are your guide for the duration of your project.

Dig carefully. If you can't avoid digging near the marks (within 18-24 inches on all sides), consider moving your project to another part of your yard.

For more information, visit:
www.call811.com

2018 Yard Debris Disposal Schedule

The following curbside collections have been scheduled for 2018. Collections will begin at **6:00 AM** on the scheduled day. Please have your materials curbside prior to the starting date and time to ensure collection.

Christmas Tree Pick Up Curbside

Wednesday, January 17, 2018

Leaves and Branches Pick Up Curbside

Wednesday, March 21, 2018

Wednesday, May 16, 2018

Only leaves placed in biodegradable brown paper bags will be collected.

No other materials and debris, including leaves in other types of bags or containers, will be collected. Thirty-gallon brown paper leaf bags are available for purchase at retail outlets throughout the Township.

Collection is limited to **branches** that are a maximum of **4 feet long** and **4 inches in diameter**. Branches must be bundled together and tied with string, not wire, in small bundles that can be easily handled. Small twigs should be placed in a rigid container. This collection is intended only for branches that have fallen due to weather events.

Drop Off Yard Debris

Saturday, April 21, 2018

On **Saturday, April 21** you may bring branches and leaves to the parking lot at 222 N. Pottstown Pike, Exton between the hours of 8:00 AM – 12:00 PM.

ELECTRONICS DROP-OFF EVENT

DATE:

**Saturday,
December 2, 2017**

TIME:

10:00 AM to 2:00 PM

LOCATION:

**West Whiteland
Municipal Building**

101 Commerce Drive
Exton, PA 19341

This event is intended for West Whiteland Township residents only

Drop-off fee of \$20 per item for CRT (Cathode Ray Tube) Monitors and Televisions with CRT Screens (limit 2 per vehicle)

These items will be collected at no charge:

- Desktop Computers
- Servers
- Printers / Scanners / Fax
- Laptops / Notebooks
- Switches / Routers
- Components (RAM, Circuit Boards, Hard Drives, Processors, Power Supplies)
- Projectors
- Security Systems
- Handheld Electronics
- DVD / VCR Players
- Networking and A/V Equipment
- Copiers



Collecting Community Donations

Again this year, West Whiteland Township will be collecting items for several local charities. Look for collection boxes in our lobby starting in December and please consider giving to one of these worthy causes.

Children's Hospital of Philadelphia (CHOP) is always looking for new toys and books for the children in the hospital. Donated items are given to patients during the holidays and on birthdays and are also used in the hospital's playrooms and patient rooms throughout the year.

Visit www.chop.edu for a list of desired items. Please note, all items must be new in their packaging.



Brandywine Valley SPCA is accepting donations ranging from pet beds, blankets, dog and cat food, kitty litter and office supplies.


See the complete Wish List at www.bvspca.org/wish-list/

We will collect and deliver nonperishable food items to the **Chester County Food Bank** at 650 Pennsylvania Drive, Exton. Their most requested food items include pasta/rice, canned fruit/vegetables, canned tuna/chicken, peanut butter and cereal. The Food Bank is not able to accept home-made food or items in glass containers.


Visit www.chestercountyfoodbank.org for more information.



CHOP Holiday Drive 2016 featuring Supervisor Denham and his colleagues.



American Red Cross



Be part of a lifesaving journey.
Donate blood.

Red Cross Blood Drive
Wednesday, December 20
1:00 - 6:00 PM

West Whiteland Township Building
2nd Floor Main Meeting Room

Register at
www.redcrossblood.org

Keeping Our Streams Clean

The Township will begin implementing a Pollutant Reduction Plan (PRP) aimed at improving the quality of the water in our streams.

The PRP will satisfy new requirements by the Pennsylvania Department of Environmental Protection (DEP) which mandate a 10% reduction in the sediment (our only identified stream pollutant) loading to the streams.

Because West Whiteland has a Municipal Separate Storm Sewer System (MS4), DEP regulates stormwater discharges from the Township's municipal storm sewers into streams through the issuance of a permit. West Whiteland's current 5-year permit expires in 2018, and the PRP is now required for renewal. In order to track the reduction in sediment, the Township mapped the many components of the existing storm sewer system including pipes, drainage inlets, outfalls and stormwater detentions basins. This information was used to calculate the volume of water being collected and discharged and determine the amount of sediment loading. Plans will be developed to update existing drainage channels to more effectively filter sediment to meet the required reduction. Go to www.westwhiteland.org to see the full PRP.

Where Does Our Water Go?

West Whiteland Township is part of three watersheds. Most of West Whiteland drains to Valley Creek and Broad Run, both of which are tributaries to the Brandywine, which in turn converges into the Christina River. Very small land areas in the southeast part of the Township drain to the Chester Creek and Ridley Creek watersheds.



How Can I Make a Difference?

- Disconnect your rain gutters (downspouts) from impervious surfaces (such as driveways and sidewalks), and direct the flow to grassed areas or into infiltration beds (dry wells).
- Install a rain barrel and use the collected rainwater for watering flowers and gardens.
- Allow a buffer of native grasses and other vegetation to grow along streams, ponds, or wetlands. This will filter pollutants, protect the stream channel and bank from erosion, and provide better habitat for aquatic based animals.
- Convert small low-lying areas into rain gardens. These can consist of small gardens of water tolerant plants and bushes that will help retain and infiltrate runoff.
- Reduce the pollutants that can be carried in runoff into streams, reservoirs and water supply intakes.
 - ▶ Always properly dispose of household hazardous waste, including cleaning solutions, paints, oils, batteries, solvents, pesticides, sealants, fertilizers, etc.
 - ▶ When applying fertilizers or pesticides to your lawn or garden, only apply the recommended amount, and do not apply just before a rainstorm, or near a water body.

Snow Day!!!

The two words that kids of all ages wish for each winter!

Remember your mom or dad saying, "When I was a kid, I used to walk six miles to school through the snow and ice!" Every family has a story like that one if you grew up in Pennsylvania. Today in West Whiteland Township, some kids walk to school or the bus stop - not the "six miles" that dad or mom had to walk each day however.

With the inevitable snow storm rounding the corner, we must ensure that walking conditions remain safe for our children

and families. How can we as responsible citizens do that? First and foremost, property owners can clear the snow from their walkways, sidewalks and driveways before the kids head off to or return from school. It makes good sense to keep these areas and steps free of ice. No one wants a family member or neighbor to slip and fall. Your mail carrier will even thank you for providing a safe path to your door!

Happy Snow Day!

Snow Plow Reminders

Your friendly neighborhood snow plow operators would like to remind you of some unspoken points of "snow etiquette" and safety to keep in mind this winter season:

- If you have a driveway, do not park on the streets during snow events. Specifically, according to Township Ordinance, you may not park any motor vehicles or other vehicle, trailer, equipment, or any other obstacle on any public street two hours after the start of any continuous snowfall and until the snow has been completely plowed for the full width of the road.
- When clearing snow, pile it on your property – not onto the sidewalk or street!
- Place your garbage containers and recycle bins on a cleared area – not perched on top of snow piles.
- Be a good neighbor! Lend a hand to those who may not be physically able to shovel or who may find walking to the store or bus stop too treacherous because of the snow or ice.
- Helping neighbors by shoveling snow from the driveway, walkway and sidewalks is a great activity for kids.
- Keep your children safe – don't let them play in the snow piles or on the snow banks at the side of the road.
- Help prevent street flooding and icing by clearing snow away from storm sewers. When the weather turns warmer and snow begins to melt, it's important that the runoff water gets into the storm sewer. If the catch basin is fully or partially covered by a build-up of snow and ice, street flooding can occur. If the temperature dips below freezing again, the street can become an ice rink.

WINTER HOLIDAY SAFETY

Before Heading Out or to Bed:

- **Blow out** lit candles when you leave the room or go to bed.
- **Turn off** all light strings and decorations before leaving home or going to bed.

Facts:

- ▶ Two of every five home decoration fires are started by candles.
- ▶ Nearly half of decoration fires happen because decorations are placed too close to a heat source.

www.nfpa.org/education ©NFPA 2016



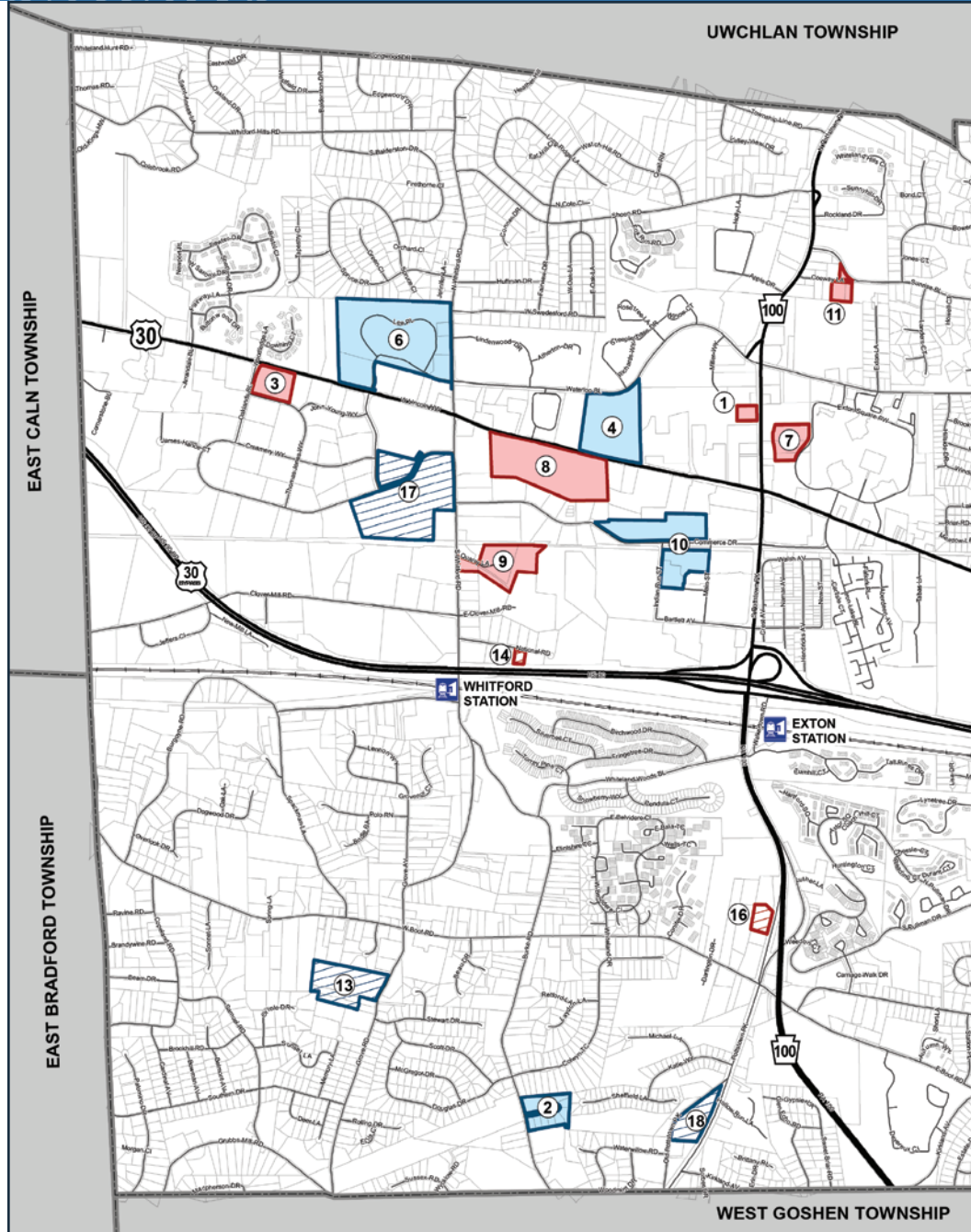
For your own convenience and sanity, try to wait until streets are completely plowed before you clean your driveway. Honestly, we don't aim for your driveways when we're plowing! But there's no way to completely clear the road and avoid your driveway. Also, if you have a fire hydrant on your property, please clear the snow away from the area around it (leaving the markers intact). This will assist fire crews in the event of an emergency.

2017 Present and Proposed Development

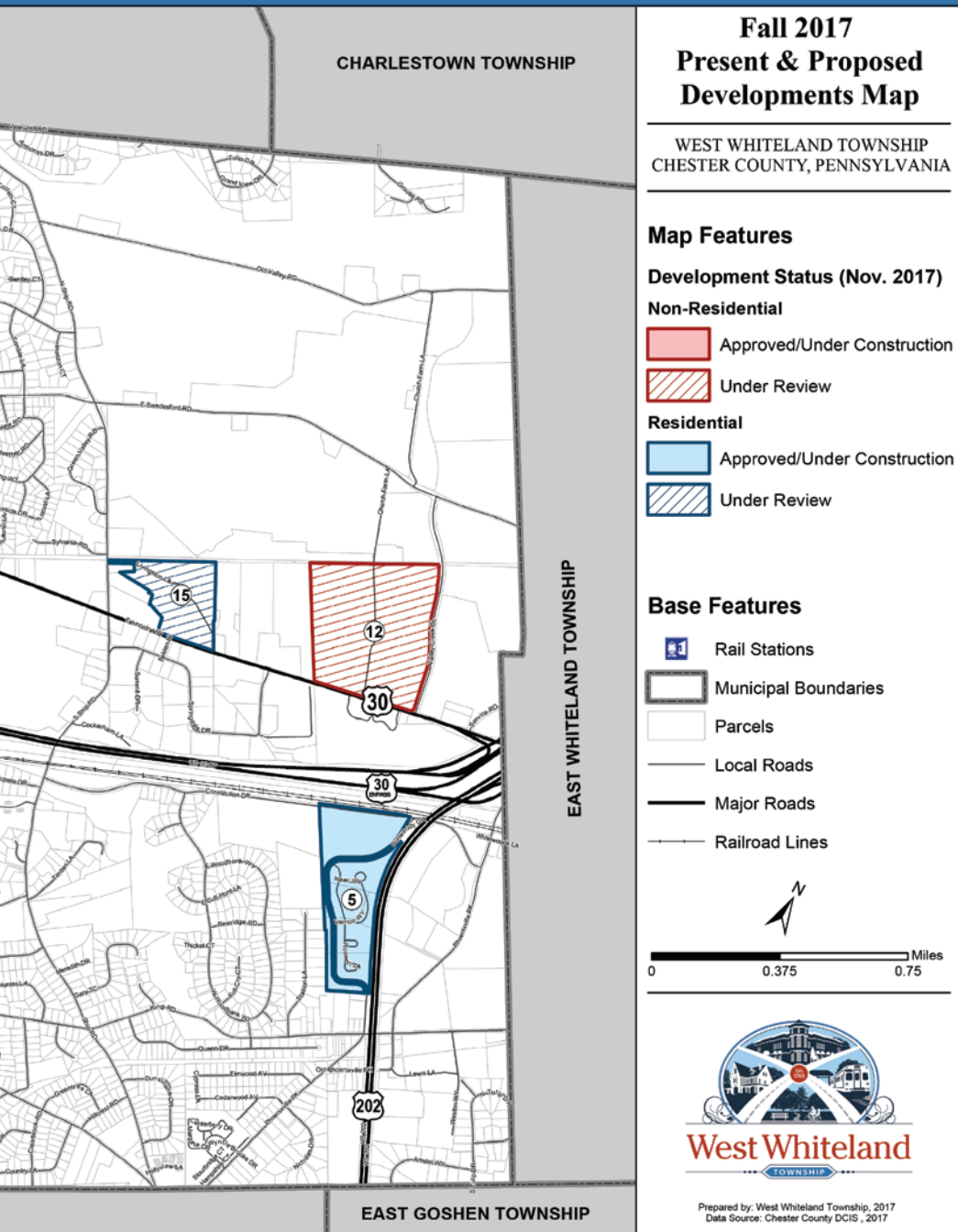
The projects listed below and on the map showcase present and proposed developments that have been completed, or are under construction, approved or under review in 2017.

PROJECTS UNDER CONSTRUCTION

- 1 CVS - Whiteland Towne Center:** The construction of a new retail store and pharmacy along Pottstown Pk. (PA 100) in Whiteland Towne Center across from the Pour House. *Expected to Open: Winter 2018.*
- 2 Dante's Run:** The construction of 7 single-family homes along Burke Rd., north of Peirce Middle School. *Completion: Winter 2018.*
- 3 Genesis Healthcare:** The construction of an 80,565 sq.ft. transitional care facility along Lincoln Hwy. in the Oaklands Corporate Center across from Woodledge at Whitford Hills. *Expected to Open: Winter 2018.*



- 4 Keva Flats:** The construction of 240 apartment units within 5 buildings located along Lincoln Hwy. between the Otto's Mini and Whiteland Towne Center. *Completion: 2018-2019.*
- 5 Reserve at Glen Loch:** The construction of 108 carriage homes along Dunwoody Dr. between King Rd. and Phoenixville Pk. *Completion: 2018-2019.*
- 6 (Former) Waterloo Property:** The construction of 86 carriage homes along N. Whitford Rd. with additional access off of Lincoln Hwy. next to Roberts Auto Mall. *Completion: Late 2018.*
- 7 Whole Foods Market:** The construction of a new 55,000 sq.ft. grocery store along east side of Pottstown Pk., just west of the Exton Square Mall. *Expected to Open: January 2018.*



Fall 2017 Present & Proposed Developments Map

WEST WHITELAND TOWNSHIP
CHESTER COUNTY, PENNSYLVANIA

Map Features

Development Status (Nov. 2017)

Non-Residential

Approved/Under Construction

Under Review

Residential

Approved/Under Construction

Under Review

Base Features

Rail Stations

Municipal Boundaries

Parcels

Local Roads

Major Roads

Railroad Lines



0 0.375 0.75 Miles



Prepared by: West Whiteland Township, 2017
Data Source: Chester County DCIS, 2017

PROJECTS UNDER REVIEW

- 12 Church Farm School (North Campus Phase I):** The construction of an addition to Greystock Hall, relocation of main parking lot and driveway, conversion of maintenance building into Arts Center and other improvements located on the north-side of E. Lincoln Hwy.
- 13 Harry Simon Estate:** The construction of 8 single-family homes along Grove Rd between Boot Rd. and Stewart Dr.
- 14 Horn Plumbing and Heating Inc.:** The construction of a 4,366 sq.ft. commercial flex space (warehouse/offices) with associated parking and loading areas along National Rd. off of S. Whitford Rd.
- 15 Lochiel Farm (Bentley Homes):** The construction of 140 townhomes, and the renovation of two existing historic structures for single-family homes, next to SS. Philip and James and near Ship Rd.

- 16 Mini LP - Self Storage Facility:** The construction of an 88,000 sq.ft. 3 story self-storage facility along Pottstown Pk. just north of the Boot Rd. CVS.

- 17 Parkview at Oaklands:** The construction of 291 apartment units within 4 buildings in the Oaklands Corporate Center along Creamery Wy. just south of the Festival at Exton Shopping Center and west of S. Whitford Rd.

- 18 Sunshine Management:** The construction of 7 single-family homes between Old Pottstown Pk. and Pottstown Pk. (PA 100).

PROJECTS APPROVED

- 8 Boy Scouts of America:** The construction of a new 15,800 sq.ft. administrative building along Lincoln Hwy. across from Otto's Mini.

- 9 New Horizons Montessori Academy:** The construction of a new two story, 19,800 sq.ft. school building to increase the capacity of the existing Montessori School just south of Quarry Ln. on S. Whitford Rd.

- 10 Reserve at Ashbridge (Main Street at Exton):** The construction of 410 apartment units within 6 buildings located along Commerce Dr., Indian Run Rd. and Woodcutter St. within Main Street at Exton.

- 11 Sunrise Blvd. Hotel (Best Western):** The construction of a 65-unit, 4 story hotel along Sunrise Blvd. next to Sunrise Assisted Living and across from Target.

New Multi-use Path from the Chester Valley Trail to the Exton Train Station

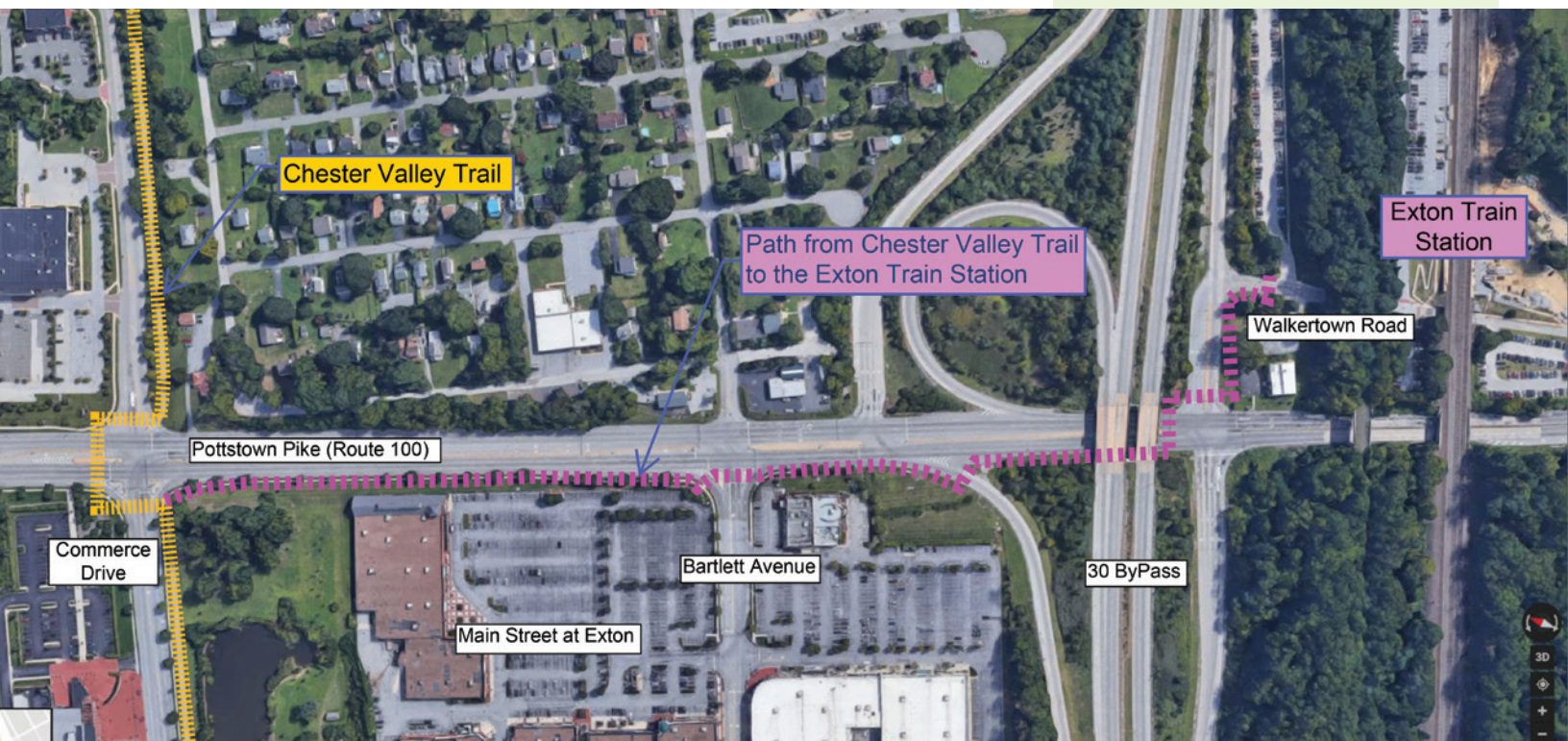
Plans are underway for the much needed bike and pedestrian path from the Chester Valley Trail to the Exton Train Station. The trail will begin at the intersection of Commerce Drive and Rte. 100 and will proceed along the west side of Rte. 100 and under the 30 Bypass bridge.

ADA-compliant pedestrian crossings, complete with curb ramps and pedestrian signals, will be provided at the intersection of Rte. 100 and the eastbound 30 Bypass ramps. The much anticipated path from the CVT to the train station will provide a safer and more suitable route for use by pedestrians and bicyclists. Plans are

presently in to PennDOT for review, and construction is anticipated to begin in the summer of 2018. Funding for the project is being provided by the Wolfson Group (owner of Main Street at Exton), as well as a PennDOT multi-modal grant and Township funds.

Exton Train Station: On the Right Track

Commuters are enjoying recent enhancements to the Exton train station and will continue to see further improvements. In the fall of 2016, SEPTA extended the parking lot and added 71 parking spaces to the north side. They are currently rebuilding and extending the platforms on both sides of the tracks and have added handicap-accessible ramps. A new station building with restrooms will be constructed by the end of 2018.





Exton Park Development

Plans for Exton Park are on the move. In July the Township hired T&M Associates to advance the project from “Master Plan” to construction documents. An engineering survey of the Exton Park site was performed in September, and the permit-

ting process is underway. Construction for Phase 1 is anticipated to begin in the fall of 2018.

Phase 1 of Exton Park’s development focuses on improvements near the

intersection of Ship and Swedesford Roads, which will be walkable from nearby neighborhoods, such as Swedesford Chase and Meadowbrook Manor, and business complexes, such as Valley Creek Corporate Center and Exton Commons. Proposed Phase 1 improvements include:

- **Nature themed playgrounds, one for ages 2-5 and one for ages 5-12, featuring a zip line, tree house, and high rope bridge**
- **Dog park**
- **Picnic pavilion**
- **9-hole disc golf course**
- **New park entrance and signage**
- **Parking lot with security lighting**
- **Accessible pathways connecting the parking lot with all proposed facilities**
- **Restroom building and utilities**

The overall Master Plan for the park includes recreational enhancements requested by the community, while leaving most of the open space in Exton Park undeveloped.



Joe Roscioli (Township Special Projects Coordinator), Lieutenant Matt Herkner and Justin Smiley (Township Planner) highlighted the Township’s recent development activity on October 12 at the Chamber of Commerce Mega Mixer Event hosted by Church Farm School.



The picturesque Church Farm School was officially founded in 1918. This aerial photograph dates back to the 1920s. One can almost visualize a bi-plane overhead, the pilot, with helmet and goggles, the passenger hanging out of the cockpit, shooting pictures of the campus.

Church Farm School

On Saturday, October 14, the Township recognized Church Farm School for 100 years of outstanding efforts to preserve the original architecture and agrarian landscape of the campus envisioned by its founder in 1918.

Supervisor Bud Turner highlighted the significant contributions the school has made to the community over the years and presented the framed Historic Preservation Award certificate. The renowned School choir treated the audience to a hymn, and Head of School Reverend Ned Sherrill and Cyrus Guo, a student of the 2018 class, both spoke on behalf of this historic school. State Representative Duane Milne presented a state flag and a certificate from the Pennsylvania House officially recognizing Church Farm School's accomplishments over the years.

Historical Commission Member Janice Earley emphasized the importance of historic preservation, and Member Bobbie Eckman presented a video highlighting the architectural features of the buildings

and the significance of the landscape. Township Manager Mimi Gleason and Historical Commission Members Frank King and Jon Martin also attended the celebration.

Church Farm School was founded by the Reverend Charles W. Shreiner as a boarding school for boys from fatherless homes. Starting with 125 acres, the Reverend developed the site into a fully functioning, financially independent school and self-sustaining farm of 1,700 acres. As the focus of the School changed, acreage was sold. However, during this process the leaders of the School continued to ensure the continuation of the agrarian landscape and the original Milton Medary designed architecture of the School buildings. Today, Church Farm School is a college preparatory school for young men.

On Monday, November 13, the Board of Supervisors and the Historical Commission honored two other historically significant properties in the Township.

Fairview

Fairview, built in 1877, was the former home of Charles Thomas, a descendent of the original Thomas family that acquired the land upon which West Whiteland is located. Over the years the mansion had been extensively renovated for a variety of multi-resident uses. Downingtown resident Pete Staz, an urban developer and partner in Core Development acquired the estate and turned his attention to the rehabilitation of the stone mansion at 225 N. Whitford Road. While maintaining as much of the original features as possible, Mr. Staz rehabilitated the old mansion into a number of upscale residential apartment units, revitalizing the property and putting it on a path to many more years of gracious living accommodations. The Township greatly appreciates the outstanding example of historic rehabilitation performed by Mr. Staz.



Whitford Hall

Colonel Richard Thomas built Whitford Hall for his son in 1796. The stone house was erected on the north side of the (then) newly opened Lancaster Pike. It now lies in a commercial area within the Whiteland Towne Center and is occupied by Gloss Salon.

Adam Sahagian, owner of the salon, loves the historic character of the old house. He persuaded the owner of the property, Whiteland Investors, L.P., utilizing much of his own funds, to make accommodations and improvements to respectfully restore the structure to near original condition. The resulting blend of modernity and antiquity make a striking visual impact. The Historical Commission recognized Mr. Sahagian and Whiteland Investors, L.P. with a plaque for outstanding restoration.



On October 11, Debi Raughley delivered cookies to the West Whiteland Police Department.

Cookies for a Cop

Cookies for a Cop was founded December 4, 2014 as a way to tell law enforcement officers that we appreciate them, value them, and want to lift their spirits. This coordinated and highly organized annual event is bringing together leaders from across the U.S. to deliver cookies to their local departments, dispatch centers, and detention centers. Their mission is to deliver 2 cookies for every one officer / civilian support personnel in the hopes of bringing a smile to their face. The gift of a cookie is such a kind thing. The gift of tens of thousands, delivered in a coordinated effort is something beyond amazing!

Police Department Donates Bicycles and Helmets to Devereux Youth

On August 11, members of the West Whiteland Township Police Department donated 15 bicycles and helmets to children and adolescents served by the Devereux Pennsylvania Children's Intellectual and Developmental Disabilities Services (CIDDS) center in West Chester, Pa.

Several members of the West Whiteland Township Police Department, plus Devereux PA CIDDS staff and youth, were on hand during the donation.

"We are thrilled that the West Whiteland Township Police Department selected Devereux as the recipient of this incredibly generous donation," said Devereux Pennsylvania CIDDS Executive Director Melanie Beidler. "As a nonprofit organization, Devereux is always in need of sporting equipment and other fun activities for the children and adolescents we serve. These bicycles and bike helmets not only will help our kids have fun, but they will learn new skills – including bicycle safety – and improve their overall

wellness and physical activity levels."

She added: "A huge thank you to West Whiteland Township Police Department Detective Mike Buchmann and Devereux Pennsylvania CIDDS Quality Management Coordinator Donna Gonzales for collaborating and making this donation possible!"

Chief of Police Joe Catov, Jr., who participated in the donation, said: "This is a great opportunity to allow these bikes to be used by students who normally wouldn't have a chance to have a bike or have access to one. It gives them an opportunity to experience what it's like to have a bike – and to go out and enjoy life."

Note: The helmets were donated to the police department through a partnership between Nemours/Alfred I. duPont Hospital for Children and Kohl's Cares.



Members of the Whiteland Township Police Department present bicycles and helmets to Devereux Pennsylvania CIDDS youth. From left: Officer Kurtis Rainey, Aidan (Devereux resident), David (Devereux resident), Desiree (Devereux resident), Detective Sergeant Jason Madormo, Lieutenant Matthew Herkner, Detective Mike Buchmann, Damien (Devereux resident), Lucas (Devereux resident), Chief of Police Joe Catov, Jr., Devereux Pennsylvania CIDDS Executive Director Mel Beidler, Rose (Devereux resident) and Officer Robert Malarick.

Thank You FOTP Sponsors

The West Whiteland Township's Friends of the Parks want to extend a special "Thank you" to West Whiteland Township Supervisors George Turner and Joe Denham, retired Supervisor Steve Soles, Township staff and the local business and resident sponsors who support and make the concert series, Egg Hunt, Tree Lighting and all community events possible. We are also grateful to the West Whiteland Fire Company's Fire Police and Uwchlan Ambulance Corps, who volunteer at every event. Please support and thank our sponsors and volunteers for making these events a reality.

The Janis Nowlan Band, the Slippery Band and Lights Out were just some of the sounds heard coming from the Gazebo this summer. Chico's Vibe and the fireworks were featured at Exton Park in July for the second year. Stay tuned for a bigger and better celebration in 2018! Friends of the Parks Committee wish to thank all who made the 24th year a rousing success!

Celebrating 25 Years of Community Events

We invite you to join us. Please consider sending your donation as soon as possible to assist with the Friends of the Parks events that support our Township parks including the Miller Park Summer Concert Series, Concert & Fireworks at Exton Park, the Egg Hunt at Boot Road Park, and the Holiday Tree Lighting. If you have any questions about the levels of sponsorship or general information, please contact the Friends at (610) 363-9525 ext. 1915 or email friendsoftheparks@westwhiteland.org.

SPONSORSHIP COMMITMENT FORM

Contributor's Name: _____

Address: _____

Sponsorship Level (Check one):

Individual or Family (\$50+) Bronze (\$250+) Silver (\$500+)

Gold (\$1,000+) Platinum (\$2,500+) Diamond (\$5,000+)

Committal Amount: \$ _____

Contact Name: _____ Title: _____

Email: _____ Phone: _____

Signature

Date

Please mail completed form and tax deductible donation to: West Whiteland Township's
Friends of the Parks, Attention: Sponsorships, P.O. Box 988, Exton, PA 19341
501(c) 3 non-profit organization

Our Sponsors

PLATINUM

H.A. Thomson

Pennsylvania Council on the Arts

GOLD

Lamb McErlane

Chester County
Library & District Center

TRC Valley Creek Corporate Center

First Resource Bank

Sam's Club

SILVER

Fast Signs

Mainline Health Center at
Exton Square

Hankin Apartments

Reilly & Sons

BRONZE

PayUSA

Rhombus Consulting, Inc.

Reilly & Sons

Main Line Health Center at
Exton Square

SSM Group

FRIENDS

Alice and Keith Choper

Janice and Gary Gottesfeld

Lori and Steve McDermott

Marguerite and Len Dube

Peggy Puy

*And all those who generously gave
at the concerts and fireworks!*



*West Whiteland Township's
Friends of the Parks*

West Whiteland Township

101 Commerce Drive
Exton, PA 19341
610-363-9525
www.westwhiteland.org

PRESORT STD
U.S. POSTAGE
PAID
PERMIT 245
SEPA 19399



*Jingle Bells! Jingle Bells! Jingle all the way over to the
West Whiteland Township building for our*

3rd Annual Holiday Tree Lighting Ceremony

Thursday, November 30 at 5:30 PM

West Whiteland Township Building, 101 Commerce Drive, Exton

Get into the spirit of the season with your neighbors and join us for cookies, hot cocoa, music and the arrival of Santa on the fire truck! Don't forget to bring your camera.

To assist with the Chester County Food Bank Holiday Food Drive, please consider bringing any of the following non-perishable food items: canned yams and sweet potatoes; gravy (packs and cans); canned vegetables (low sodium preferred); seasoned stuffing mix; grains and rice; canned fruit (in juice); applesauce.